



Product Brochure

Product: Microcell Omni and Panel Antennas

WiComm Technologies' Microcell Broadband and Multiband Omnidirectional and Panel antennas have been designed to exceed performance requirements in VSWR, Patterns, PIM and to be visually appealing for all indoor installations.

Our directional Ceiling mount antennas have been designed to provide 90° coverage when a full omni pattern would be disruptive to neighboring cells.

The WiComm standard “single-hole” mount design on our range of Omnidirectional antennas enables fast and efficient ceiling mounting – a great benefit for installations in False-Ceiling tiles. (Perfect for residential and commercial requirements).

Our Microcell Panel antennas are designed for indoor and outdoor installations.

The Panel antennas come complete with wall mounting brackets and hardware.

The Omnidirectional and Panel antennas come install-ready with Type-N Female terminated cable tail of 300mm (other lengths can be custom ordered).

Please see following Product Sheets for specific product details.

- GQRNV0M: 824-960/1710-2500MHz, Omni-directional Indoor Ceiling-mount Antenna (Page 3-4)
- LGQRNV0M: 790-960/1710-2700MHz, Omni-directional Indoor Ceiling-mount Antenna (Page 5-6)
- LGQRNV90M: 790-960/1710-2700MHz, 90° Directional Indoor Ceiling-mount Antenna (Page 7-8)
- RTDV9035M: 2400-2500/5100-5858MHz, Compact Directional Indoor/Outdoor Panel Antenna (Page 9-10)
- SDV35M: 3300-3800MHz, Low-Profile Directional Indoor/Outdoor Panel Antenna (Page 11-12)



Product Brochure

Contact Information:

At WiComm Technologies we are available for enquiries at any time. We will always respond to your emails within 24 hours and most times will be the same day within extended business hours.

Please do not hesitate to contact us on the following emails:

For Sales: **sales@wicommtech.com**

For Engineering or Technical: **engineering@wicommtech.com**

For President/Operations: **steve_hardie@wicommtech.com**

Alternatively, please call WiComm Technologies at the numbers below. If we are not available to take your call, please leave a message and we assure you that we will return your call promptly.

Wicomm Technologies: (USA) 919-760-7664



Product Brochure Sheet

<u>Model No:</u>	GQRNV0M-NF
<u>Description:</u>	Wide-band Indoor Omni-directional Multi-band Microcellular Antenna

Introducing the WiComm Technologies' Multi-band, Omni Microcell antennas, designed to exceed performance requirements in VSWR, Patterns and PIM, and to be visually appealing for all indoor installations.

The WiComm standard "single-hole" mount design, enables fast and efficient ceiling mounting – a great benefit for installations in False-Ceiling tiles. Perfect for residential and commercial requirements.

This product provides greater flexibility by covering the full range of bands in the 824-2500MHz range including 2G and 3G cellular, and WiFi frequencies.

The antenna comes install-ready with Type-N Female terminated cable tail of 300mm (other lengths can be custom ordered).



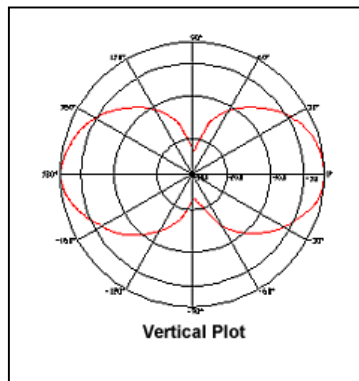
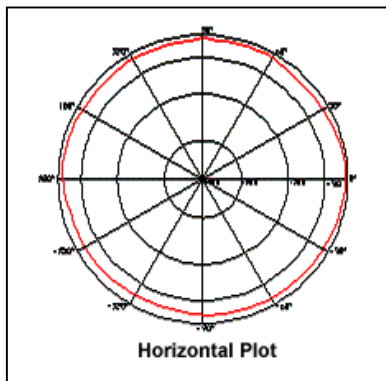
Model No:

GQRNV0M-NF

Specifications:

Electrical Specifications:	
Operation Frequency	8240-960 / 1710-2500MHz
3dB Azimuth Beamwidth	360° (Omni-directional)
Elevation Beamwidth	60°
Gain (Full Co-polar gain)	2.0dBi
VSWR	1.7:1@824-960, 1.4:1@1710-2170, 2.0:1@2170-2500
Polarization	Vertical
Max Power	50w
RF Terminations	300mm (12") RG58 Cable w/ N-Type Female
Mechanical Specifications:	
Antenna Dimensions	Ø180 x 63mm (Ø7.1 x 2.5 inches)
Antenna Weight	220g (0.5 lbs)
Radome Material	ABS
Color	WiComm White (Matt off-white)
Hardware (Mount) Material	Durable plastic (Incl. Hardware)

Measured Plots at 1710MHz:





Product Brochure Sheet

<u>Model No:</u>	LGQRNV0M-NF
<u>Description:</u>	Wide-band Indoor Omni-directional Multi-band Microcellular Antenna

Introducing the WiComm Technologies' Multi-band, Omni Microcell antennas, designed to exceed performance requirements in VSWR, Patterns and PIM, and to be visually appealing for all indoor installations.

The WiComm standard "single-hole" mount design, enables fast and efficient ceiling mounting – a great benefit for installations in False-Ceiling tiles. Perfect for residential and commercial requirements.

This product provides greater flexibility by covering the full range of bands in the 790-2700MHz range including 2G and 3G cellular, WiFi, WiMax 2.5GHz and LTE 2.6GHz

The antenna comes install-ready with Type-N Female terminated cable tail of 300mm (other lengths can be custom ordered).



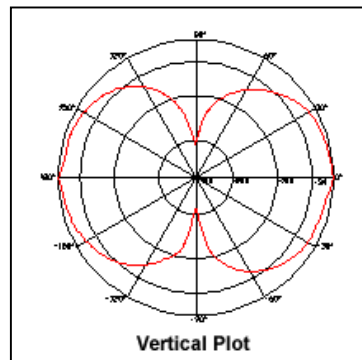
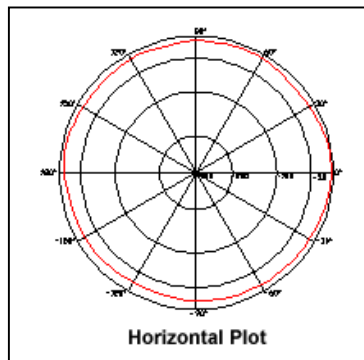
Model No:

LGQRNV0M-NF

Specifications:

Electrical Specifications:	
Operation Frequency	790-960 / 1710-2700MHz
3dB Azimuth Beamwidth	360° (Omni-directional)
Elevation Beamwidth	90°
Gain (Full Co-polar gain)	3.0dBi
VSWR	2:1@790-824, 1.8:1@824-960, 1.5:1@1700-2700
Polarization	Vertical
Max Power	50w
RF Terminations	300mm (12") RG58 Cable w/ N-Type Female
Mechanical Specifications:	
Antenna Dimensions	Ø167 x 100mm (Ø6.6 x 4 inches)
Antenna Weight	310 g (0.7 lbs)
Radome Material	ABS
Color	WiComm White (Matt off-white)
Hardware (Mount) Material	Durable plastic (Incl. Hardware)

Measured Plots at 1710MHz:



<u>Model No:</u>	LGQRNV90M-NF
<u>Description:</u>	Wide-band Indoor 90° Ceiling-mount Multi-band Microcellular Antenna

Introducing the WiComm Technologies' Multi-band, 90° Ceiling-mount Microcell antenna, designed with an internal reflector for aesthetic appeal and providing (approx) 90° coverage when a full omnidirectional pattern would be disruptive to neighboring cells.



This product provides greater flexibility by covering the full range of bands in the 790-2700MHz range including 2G and 3G cellular, WiFi, WiMax 2.5GHz and LTE 2.6GHz

The WiComm standard "single-hole" mount design, enables fast and efficient ceiling mounting – a great benefit for installations in False-Ceiling tiles. Perfect for residential and commercial requirements.

The antenna comes install-ready with Type-N Female terminated cable tail of 300mm (other lengths can be custom ordered).



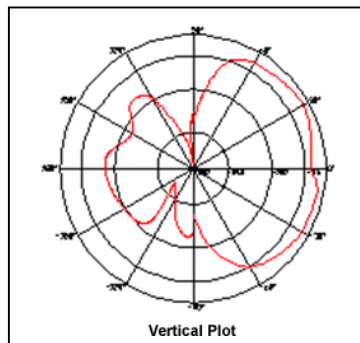
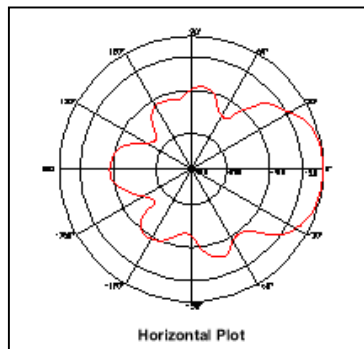
Model No:

LGQRNV90M-NF

Specifications:

Electrical Specifications:	
Operation Frequency	790-960 / 1710-2700MHz
3dB Azimuth Beamwidth	115°(790-960MHz), 85°(1710-2700MHz)
Elevation Beamwidth	120°(790-960MHz), 80°(1710-2700MHz)
Gain (Full Co-polar gain)	6.0dBi
VSWR	<2.0:1
Polarization	Vertical
Max Power	50w
RF Terminations	300mm (12") RG58 Cable w/ N-Type Female
Mechanical Specifications:	
Antenna Dimensions	Ø187 x 70mm (Ø7.4 x 2.8 inches)
Antenna Weight	450 g (1.0 lbs)
Radome Material	ABS
Color	WiComm White (Matt off-white)
Hardware (Mount) Material	Durable plastic (Incl. Hardware)

Measured Plots at 1710MHz:





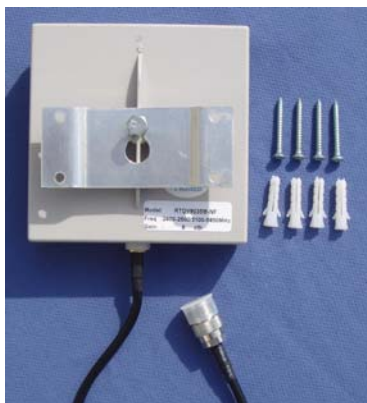
Product Brochure Sheet

<u>Model No:</u>	RTDV9035M-NF
<u>Description:</u>	Dual-band (2400-2500 / 5100-5850MHz) Microcellular Panel Antenna

Introducing the WiComm Technologies' Dual-band directional Microcell Panel antenna, designed to exceed performance requirements while maintaining a sleek low-profile appearance suitable for all **indoor** and **outdoor** installations, making this antenna ideal for residential and commercial requirements.

The RTDV9035M antenna provides greater flexibility by covering the full range of bands in the 2400-2500MHz and 5100-5850MHz WiFi and WiMAX applications.

The antenna comes install-ready with Type-N Female terminated cable tail of 300mm (other lengths can be custom ordered).



The WiComm Technologies Low Profile Panel antenna comes ready to install with the packaged wall-mount kit including wall-mount bracket and screws.

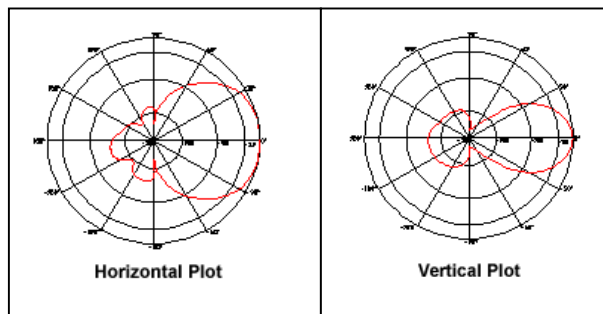
Model No:

RTDV9035M-NF

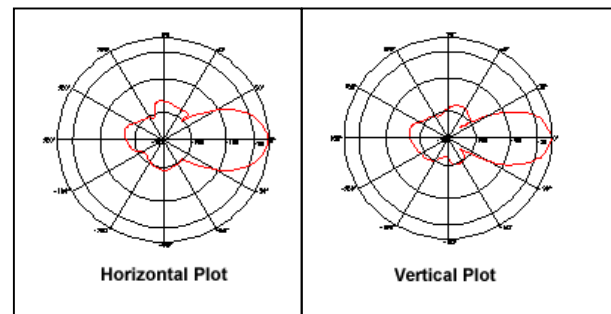
Specifications:

Electrical Specifications:	
Operation Frequency	2400-2500 / 5100-25850 MHz
3dB Azimuth Beamwidth	90°(2400-2500) / 36°(5100-5850)
Elevation Beamwidth	48°(2400-2500) / 32°(5100-5850)
Gain (Full Co-polar gain)	8dBi (2400-2500) / 10dBi (5100-5850)
VSWR	1.7:1 (2400-2500), 1.7:1 (5100-5850)
Polarization	Vertical
Max Power	50w
RF Terminations	300mm (12'') RG58 Cable w/ N-Type Female
Mechanical Specifications:	
Antenna Dimensions (LxWxD)	113 x 113 x 39mm (4.5 x 4.5 x 1.5 inches)
Antenna Weight	200 g (0.5 lbs)
Radome Material	UV Protected ABS
Color	WiComm White (Matt off-white)
Hardware (Mount) Material	Aluminum (SS Hardware)

Measured Plots at 2400MHz:



Measured Plots at 5400MHz:





Product Brochure Sheet

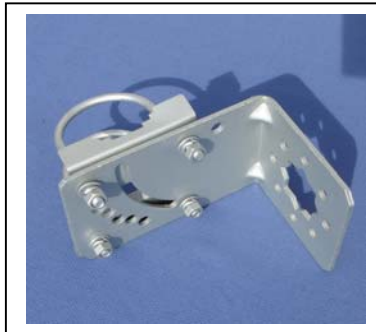
<u>Model No:</u>	SDV35M-NF
<u>Description:</u>	High Gain (3300-3800MHz) Microcellular Panel Antenna

Introducing the WiComm Technologies' High Gain directional Microcell Panel antenna, designed to exceed performance requirements while maintaining a sleek low-profile appearance in a waterproof UV-resistant enclosure suitable for all **indoor** and **outdoor** installations.

The SDV35M antenna provides greater flexibility by covering the full range of bands in the 3300-3800MHz frequency range suitable for WiMAX applications and boasts a 19dBi Gain with VSWR of 1.5:1 across the band while maintaining an overall size of 300mm (12") square and a thickness of only 25mm (1").



The WiComm Technologies Microcell Panel Antenna comes install-ready with Type-N Female terminated cable tail* and wall-mount kit providing Adjustable Downtilt, adaptable for mounting-pipes of up to 2" diameter.



*Cable tail standard length of 300mm (additional lengths are available)

Model No:

SDV35M-NF

Specifications:

Electrical Specifications:	
Operation Frequency	3300-3800MHz
3dB Azimuth Beamwidth	30°
Elevation Beamwidth	26°
Gain (Full Co-polar gain)	19dBi
VSWR	1.5:1
Polarization	Vertical
Max Power	50w
RF Terminations	300mm (12") RG58 Cable w/ N-Type Female
Mechanical Specifications:	
Antenna Dimensions (LxWxD)	305 x 305 x 25mm (12 x 12 x 1.0 inches)
Antenna Weight	1250g (0.5 lbs)
Radome Material	UV Protected ABS
Color	WiComm White (Matt off-white)
Hardware (Mount) Material	Aluminum (SS Hardware)

Measured Plots at 3550MHz:

